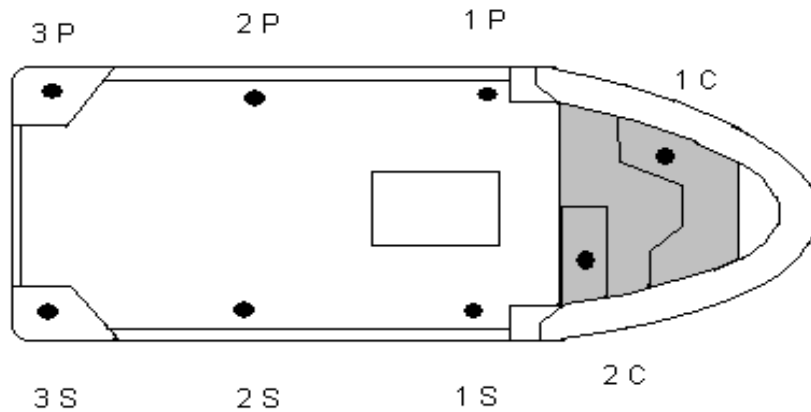


COVID - 19 RISK ASSESSMENT FOR THE USE OF VICTORY CLASS LAUNCH



COMPULSORY REQUIREMENTS

ALL PERSONS USING THE VICTORY CLASS LAUNCH WHEN GOING TO AND FROM THEIR MOORING MUST WEAR A **FACE COVERING** AND A **LIFE JACKET**. **THERE WILL BE NO EXCEPTIONS.**

DEPARTURE POINTS

KB PONTOON - WHEN DEPARTING FROM KB PONTOON PASSENGERS SHOULD FIRST GO TO THE QUAYSIDE AT THE TOP OF KB RAMP TO AWAIT BOARDING INSTRUCTIONS FROM THE DESIGNATED DRIVER. WHILST WAITING ALL SOCIAL DISTANCING AND GATHERING REGULATIONS MUST BE APPLIED.

PSC PONTOON - WHEN DEPARTING FROM PSC PONTOON PASSENGERS SHOULD FIRST GO TO THE QUAYSIDE AT THE TOP OF PSC RAMP TO AWAIT BOARDING INSTRUCTIONS FROM THE DESIGNATED DRIVER. WHILST WAITING ALL SOCIAL DISTANCING AND GATHERING REGULATIONS MUST BE APPLIED.

BOARDING AND DISEMBARKATION

YOUR DESIGNATED DRIVER WILL ALLOCATE EACH PASSENGER A POSITION NUMBER (AS INDICATED ON THE DIAGRAM) WHICH WILL BE YOUR FIXED POSITION FOR THE DURATION OF YOUR JOURNEY UNLESS OTHERWISE INSTRUCTED BY THE DRIVER.

THE COCKPIT POSITIONS ARE MARKED 1 TO 3 PORT AND 1 TO 3 STARBOARD. DEPENDING ON WHICH SIDE THE MOORING LINES ARE, POSITION 1 OF THAT SIDE WILL BE IN CHARGE OF THE BOW LINE, AND POSITION 2 IN CHARGE OF THE STERN LINE. THIS WILL APPLY TO BOTH DEPARTURES AND ARRIVALS.

DISEMBARKATION AT A PONTOON (MARINA AND PORTSMOUTH) WILL BE ONE AT A TIME AND IN REVERSE ORDER TO BOARDING. WHEN YOU HAVE DISEMBARKED ALL SOCIAL DISTANCING AND GATHERING REGULATIONS MUST BE APPLIED, PLUS ANY ADDITIONAL PROTOCOL THAT THE MARINA OR PONTOON OWNERS MAY HAVE. AFTER SAILING, THOSE IN THE MARINA PLEASE WAIT WITH YOUR BOAT UNTIL YOU ARE CALLED BY THE DESIGNATED DRIVER TO BOARD THE VICTORY CLASS LAUNCH.

THOSE GOING TO THE SWINGING MOORINGS SHOULD FOLLOW THE DRIVERS INSTRUCTIONS WHEN GETTING ON AND OFF YOUR VICTORY.

PLEASE MAKE SURE THE DRIVER IS AWARE YOU ARE GOING TO A SWINGING MOORING PRIOR TO SPACE ALLOCATIONS IN PORTSMOUTH