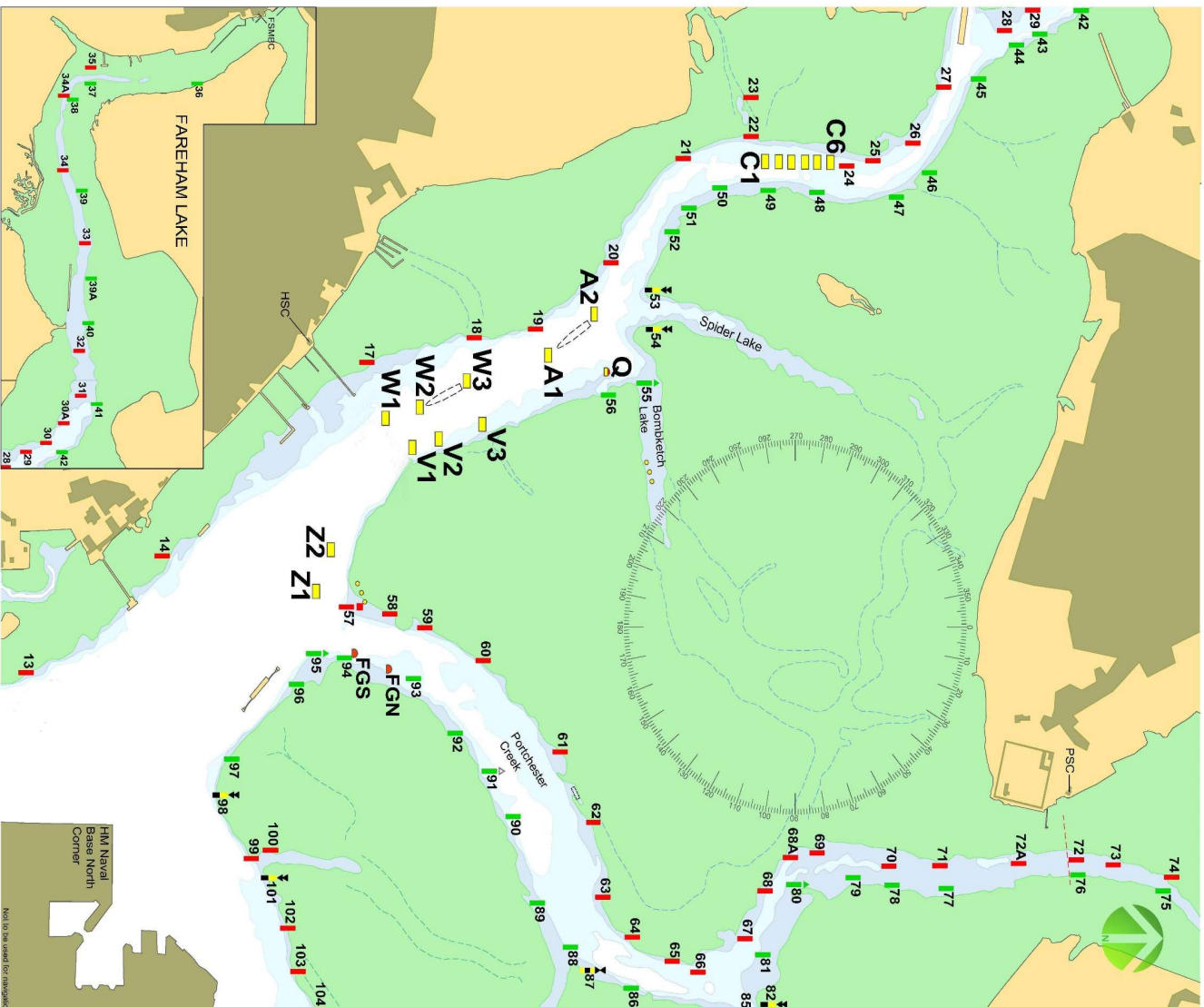


VICTORY CLASS HARBOUR CHART 2024 (v1)

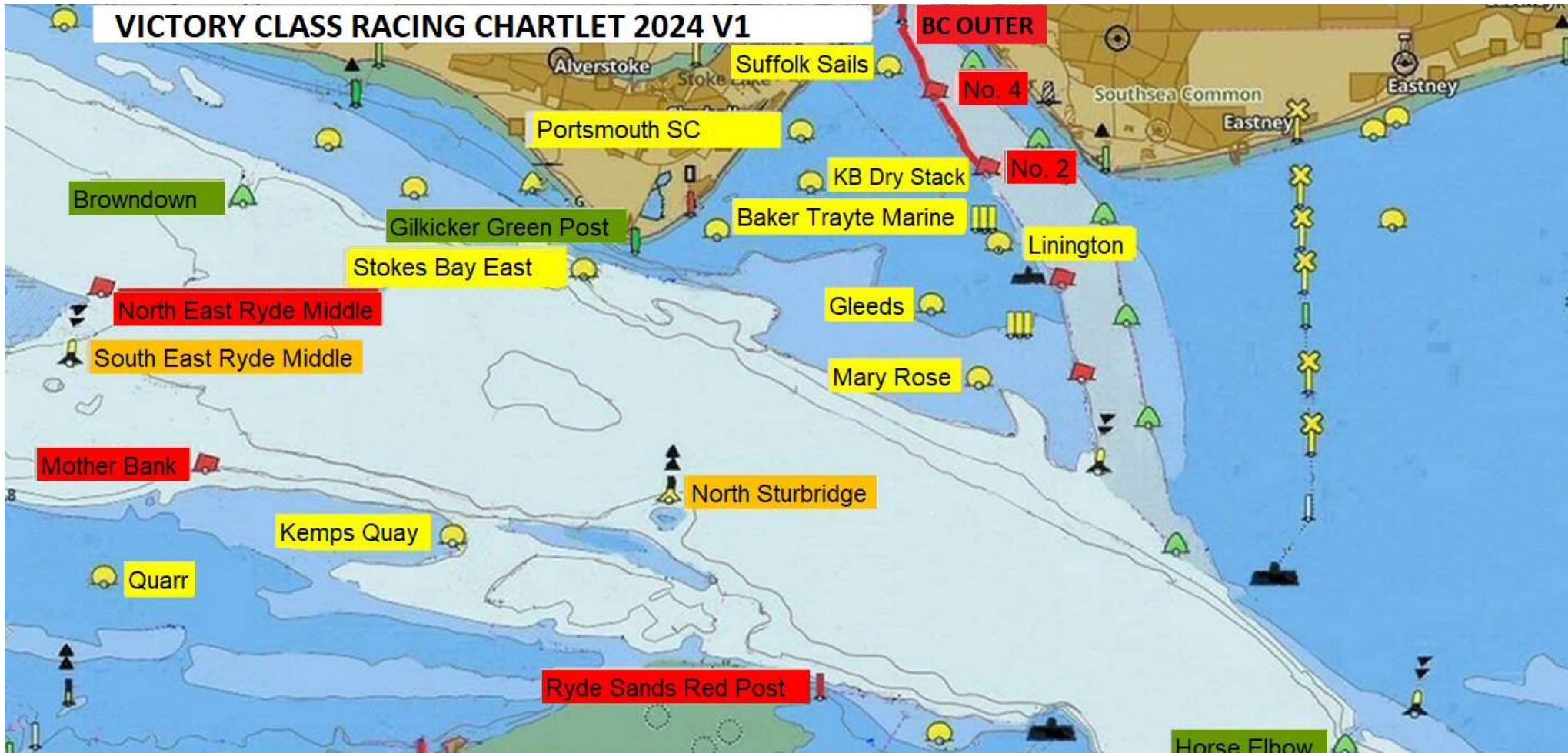


Wind Direction	Course No	Starting Line CMTTE Boat to	1	2	3	4	5	6	7	8
N	1	Z1	A1	W1	A1	W1	A1	Finish*		
N	2	Z1	60	57	A2	Z1	60	57	A2	Finish*
NE	3	Pile 93	63	Z2	63	Z1	63	Z1	60	Finish*
NE	4	Pile 58	86	Z1	63	Z1	63	Finish*		
E	5	Z1	88	60	88	Z2	88	60	88	Finish*
E	6	Pile 60	89	Z2	61	Z2	Z1	Finish*		
SE	7	Z1	99	A2	99	Z2	99	Finish*		
SE	8	Z2	13	V1	99	V1	Z2	V1	Finish*	
S	9	Z1	13	60	13	60	13	Z2	Finish*	
S	10	Z2	13	A1	Z1	W3	60	Finish*		
SW	11	Pile 90	Z2	89	Z2	88	91	88	Finish*	Finish*
SW	12	Pile 90	58	91	58	91	58	91	Finish*	Finish*
W	13	Pile 88	61	88	Z2	90	60	90	Finish*	Finish*
NW	14	Z1	A2	Z1	A2	V1	A2	Finish*		
NW	15	Z1	W1	98	Z1	98	A2	Finish*		
	16	Starting Line and Course as indicated by the Committee Boat								

*Finishing Line to be defined by OOD.

A finish line in the vicinity of Z1 may work for most of these courses.

VICTORY CLASS RACING CHARTLET 2024 V1



BUOY CODES				Laid Mark Codes		Finish Lines	
BT	*Baker Trayte	MB	Mother Bank	▲	Windward Laid Mark	A	Suffolk Sails - Haslar Flagpole
GL	*Gleeds	MR	Mary Rose	↔	Spreader Laid Mark	B	Portsmouth SC - KB Dry Stack
KB	*KB Dry Stack	NR	North East Ryde Middle	▼	Leeward Laid Mark	C	Baker Trayte Marine - Gilkicker Green Post
LT	*Linnington	NS	North Sturbridge	▲	Gybe Laid Mark	D	Stokes Bay East - Gilkicker Green Post
PS	*Portsmouth SC	QU	Quarr	#	Start / Finish Line (Or Gate)	E	NE Ryde Middle - SE Ryde Middle
SS	*Suffolk Sails	RP	Ryde Sands Red Post	:	The sequence displayed before the colon shall be repeated; then proceed to any mark(s) shown after the colon.	F	Linnington - Spitbank Fort
BD	Browdown	SR	South East Ryde			G	Gleeds - Mary Rose
GP	Gilkicker Green Post	SB	Stokes Bay East				
HE	Horse Elbow	WA	Warner				
KQ	Kemps Quay			+	ODM of Start Line		

*Victory Class Racing Mark Sponsors