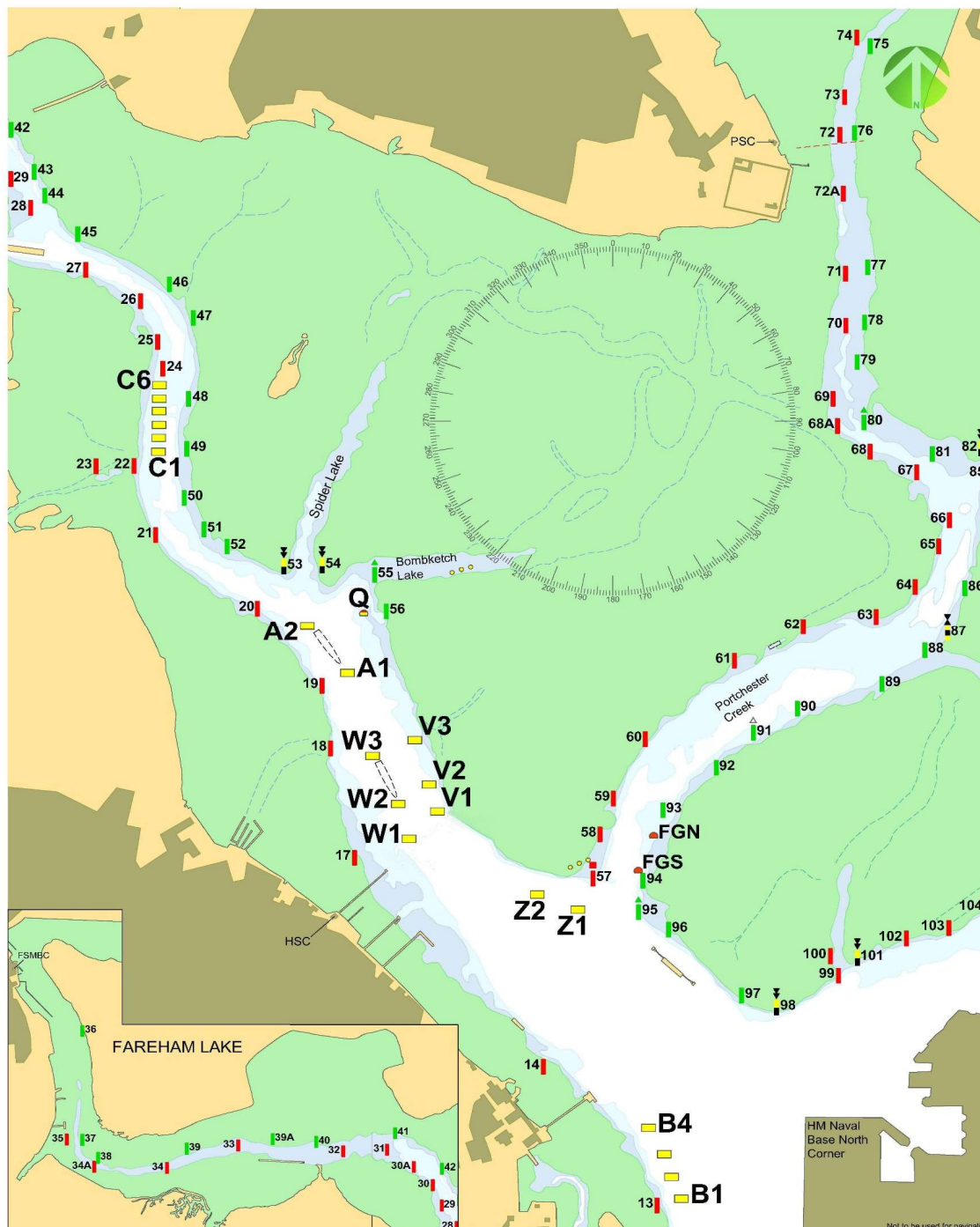


VICTORY CLASS HARBOUR CHART 2022 (v2)



Wind Direction	Course No	Starting Line CMTE Boat to	1	2	3	4	5	6	7	8
N	1	Z1	A1	W1	A1	W1	A1	Finish*		
N	2	B4	59	B4	59	B4	Z1	B4	Z1	Finish*
NE	3	Pile 93	63	Z2	63	Z1	63	Z1	Finish*	
NE	4	Pile 58	86	Z1	63	Z1	63	Finish*		
E	5	B4	102	Z2	61	89	W1	Finish*		
E	6	Pile 60	89	Z2	61	89	Z1	Finish*		
SE	7	Z1	99	A1	99	Z2	Finish*			
SE	8	Z2	13	V1	99	V1	Z1	V1	Finish*	
S	9	Z1	13	60	13	60	B4	Z1	Finish*	
S	10	Z2	13	A1	Z1	W3	60	Finish*		
SW	11	Pile 90	Z2	89	Z2	88	Z2	Finish*		
SW	12	Pile 90	58	91	58	91	58	Finish*		
W	13	Pile 88	61	88	Z2	90	60	Z2	Finish*	
NW	14	B4	W3	99	W1	Z1	W1	Finish*		
	15	Starting Line and Course as indicated by the Committee Boat								

***Finishing Line:**

Unless specified otherwise by OOD, boats shall proceed from the last mark of the course and leave to Port all B Trot Buoys and finish between B1 and Pile 13.