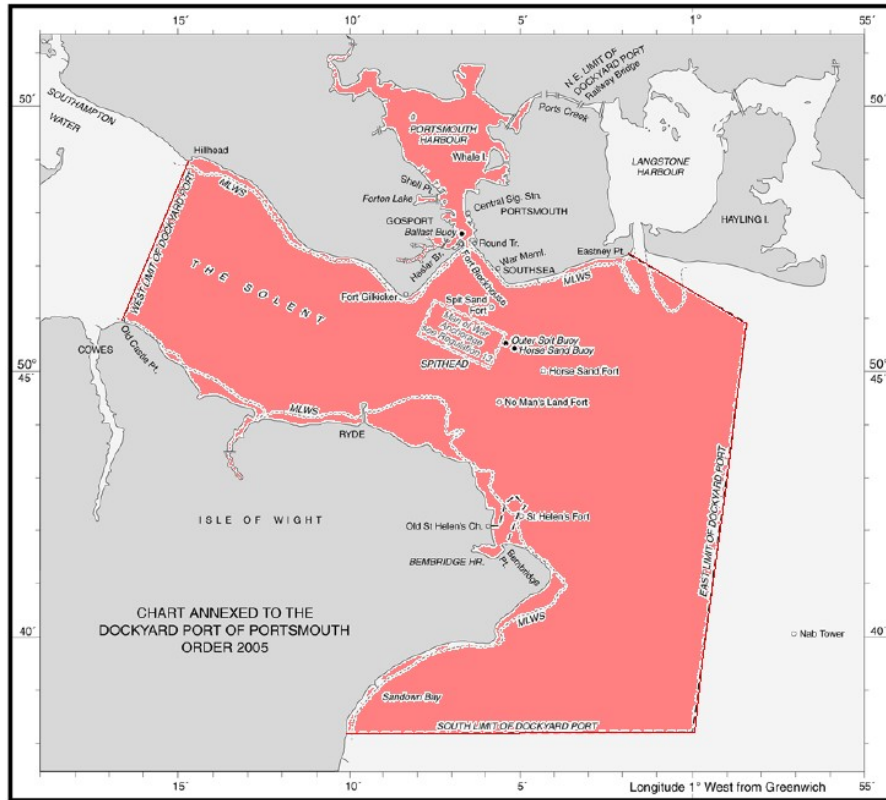


QHM RISK ASSESSMENT TEMPLATE AND GUIDANCE NOTES FOR EVENTS ON THE DOCKYARD PORT OF PORTSMOUTH



(Dockyard port of Portsmouth in pink)



INTRODUCTION

If an event is to be held within the limits of the Dockyard Port of Portsmouth (DPP) a Risk Assessment is to be submitted and approved by the Queens Harbour Master (QHM) prior to the event being held. If the event has the potential to cross into bordering jurisdictional harbour authority areas it is the responsibility of the organiser/ club / group to contact and complete documentation associated with those harbour authorities.

QHM definition of “event”: *any vessel/s, craft or person/s participating in an organised gathering and/ or scheduled activity that may affect the safety of navigation or impact directly or indirectly on any other waterway users on the Dockyard Port of Portsmouth.*

SUBMISSION

All QHM documentation e.g. risk assessments, event plans etc for the proposed event should be submitted to QHM direct via the email: portsmouth@ghm.mod.uk

THIS DOCUMENTATION IS REQUIRED 28 DAYS PRIOR TO THE EVENT DATE

NOTE: ANNUAL RISK ASSESSMENTS EXPIRE ON 31 DEC AND MUST BE REVIEWED

EVENT ORGANISERS AND/ OR DESIGNATED PERSONS SHOULD TAKE NOTE OF THESE 3 KEY POINTS

1. The primary responsibility for the safety of participants lies with the participants themselves. Beyond that, the organiser/ club/ group are likely to have a duty of care and must ensure that the event is managed as safely as reasonably possible. A submitted risk assessment approved by QHM **does not** eliminate the responsibility of the organiser/ club/ group to ensure the safety of all their participants.
2. QHM has General Directions and/or “Byelaws” in force and these may impact on the setting of courses and other aspects of an event. Organisers/ clubs/ groups and their participants all need to be aware of these. It is imperative that organisers/ clubs/ groups clearly indicate the location/s that the event/s will be held. Organisers/ clubs/ groups should take all reasonable steps to promulgate General Directions/ restrictions to their participants
3. Event conflicts are inevitable in time, date or place. Where possible these conflicts should be addressed between each respective organiser/ club/ group in advance, rather than burdening QHM. All events will be prioritised on a “first in” basis.

NOTIFICATION AND EVENT RISK ASSESSMENT GUIDANCE NOTE

The Dockyard Port Marine Safety Policy requires QHM Portsmouth to ensure that risk assessments are carried out to identify and minimise risks which may result in personal injury, damage to property and impact the environment.

Although many organisers/ clubs/ groups are now familiar with the undertaking of appropriate risk assessments for each of their respective activities, for some a formal risk assessment is still a novel concept. The purpose of this QHM guidance note and template is to facilitate the process for those less familiar with undertaking risk assessments.

QHM has defined 5 main categories for events being held in the DPP: MAJOR, MEDIUM, SMALL, SWIM and ANNUAL.

MAJOR – This is an event that will have a significant and potentially disruptive impact on the operation of the DPP. This event will require special arrangements agreed in advance with the QHM. The Risk Assessment will need to be prepared in consultation, where appropriate, with the emergency services and stakeholders. An example of such an event is the Americas Cup World Series.

QHMs criteria for a MAJOR event includes but not limited to;

- Multiple participating vessels/ craft,
- An expected spectator fleet in excess of 1,000,
- An event where an exclusion zone is requested by organiser or imposed by QHM.

PLEASE NOTE MAJOR event organisers will need to submit an “Event Plan” as well as the Risk Assessment.

The Event Plan includes, but is not limited to:

- An itinerary of each day’s scheduled activities on and over the water.
- Where and when participating vessels will arrive and leave race location.
- An on-water management plan for marshalling.
- A complete communications construct and how each relevant authority is included.
- An Emergency management plan.

MEDIUM – This is an event that will have a noticeable impact on the operation of the DPP for which QHM would need to consider special arrangements in advance e.g. putting in place exclusion zones. Event examples of this category are Portsmouth Triathlon, P1 British Powerboat Championships, Oil Spill Exercise and Sailing regattas.

SMALL – This is an event having little or no impact on the overall operation of the DPP and has minimal risks to participants and non-participants. For this category of event a formal risk assessment is still appropriate. A SMALL event may not require the in-depth review that a MAJOR or MEDIUM requires. The QHM Risk Assessment Template is to be used to notify QHM. An example of a SMALL event is Scout Kayak group conducting a training exercise.

SWIM – This is an event that has swimming as either the primary activity or is part of a bigger event e.g. Cross Solent Swim or triathlon.

ANNUAL – This type of event is one where a club holds multiple events over the calendar year period. The events are held in the same location/area with no external influences that could potentially alter the original identified risks that have been assessed in the Risk Assessment. This category is best used by Sailing and Yacht Clubs who have a pre-planned annual calendar. EACH event on the clubs planner needs to be placed in the Risk Assessment. Any event not part of the annual event calendar will need a separate Risk Assessment completed and submitted.

How to complete the following Risk Assessment

Pages 4 – 17 must be completed by the organiser/ club/ group Designated Person or delegate who is responsible for the events safety.

It may seem that there are repetitive questions throughout, but ensure all sections are completed where relevant. Even if you feel it has been previously stated within the document, please complete all relevant sections.

Below numbered guidance notes correspond with relevant sections within Risk Assessment Template.

1. **Introduction:** Please supply an overview of the event, date or dates of event. The number of participants expected the type and size of vessel/ craft participating in event. Who is responsible for the organisation of event. Is the event new or has it been held previously
2. **Start of Event:** Please stipulate the precise location for the start of the event. Include the times of the start.
3. **Event Area:** Description of the event/racing area showing the boundaries. Please stipulate, as the organiser, if you feel there will be any likely impact on port operations. Please insert a chart graphic or draw a graphic on page 8 indicating location of event and any desired buoy positions.
4. **Finish of Event:** Please stipulate the finishing location. Where appropriate please stipulate the timeframes for the event's completion.
5. **Manning and Race Control:** Please include the plans for the effective event management of the event. This includes the organisational structure, event/race control location and any emergency plans.
6. **Risk Assessment:** Please stipulate that a quantitative assessment of the event risks both before and after the control measures has been done. A final risk assessment is based on a judgement of the likely effect that the control measures will have in reducing the event risks. The QHM risk assessment template is supplied for ease of completion and submission.

SUBMISSION

Please submit all documentation to QHM via the email: portsmouth@qhm.mod.uk

THIS DOCUMENTATION IS REQUIRED 28 DAYS PRIOR TO THE EVENT DATE

NOTE: ANNUAL RISK ASSESSMENTS EXPIRE ON 31 DEC AND MUST BE REVIEWED



QHM Risk Assessment Template

Annual

Event Category

(Small, Medium, Major, Swim, Annual)

Distribution list: *(who will receive a copy)*

- ☐ QHM Portsmouth
- ☐ ABP Southampton
- ☐ Coast Guard
- ☐ Police
- ☐ Ambulance
- ☐ Fire & Rescue
- ☐ Portsmouth Council
- ☐ Local Ferry Companies

CLUB/ GROUP/ ORGANISER: Victory Class Association / Victory Class Ltd

(E.g. Perfect Portsmouth Yacht Club)

EVENT TITLE: Victory Class Racing 2020

(E.g. Better Ever Yacht Race Regatta)

DATE/S: August to October 2020

Event Title: ___ Victory Class Racing 2020 Annual_____ QHM Safety Risk Assessment

(E.g. Better Ever Yacht Race Regatta)

1. Introduction:

- 1.1. The Victory Class are a class of one design keelboat based in Portsmouth Harbour with the boats generally berthed at Haslar Marina, the swinging moorings off the Gosport Ferry Pontoon (Gosport side) and within the Camber. The boats are circa 6m long with a Bermuda rig and draw 0.75m.
- 1.2. Racing for the boats is organised by the Victory Class (VC) and generally takes place to the South and West of Portsmouth harbour entrance and adjacent to the Haslar Wall. Racing is held on Tuesday and Thursday evenings as well as on Saturdays. There a few additional races scheduled outside these times. Organised racing is held from April to October. The average fleet size is ten boats.
- 1.3. All boats sail under the rules of the Victory Class which requires certain mandatory safety equipment to be carried including VHF radios and a hand-held flare pack. Under the rules all boats are required to carry an operational outboard while racing.
- 1.4. The type of racing organised does not attract significant attention from non-participants.
- 1.5. There is a risk of collision and grounding which is always present in sailing.
- 1.6. There is a risk of injury to the crews of the yachts, most notably in cases of gear breakage, collision or Man-Overboard (MOB).
- 1.7. The location of the race area and the close proximity of other Victory Class Yachts means that additional safety cover is not deemed necessary.
- 1.8. This paper assesses the likely risks that will be encountered in the race area and defines the measures needed to reduce the risks to an acceptable level.

2. Start of Event:

- 2.1. Races will start at the times specified in the Victory Class Racing Programme 2020. Races outside Portsmouth Harbour are generally started from Suffolk Sails Racing Mark or other nearby racing marks. In Harbour races are generally started from the Z1, Z2 buoy area or upto pile 90.

3. Event Area:

- 3.1 In Harbour races are run north of Pile 13 as shown on the 2020 Harbour Chartlet. Weekday evening outside races are generally held in the triangle formed by the red post at the harbour entrance, Spitbank Fort and Gilkicker Point. Weekend races tend to go further afield in the Eastern solent. Competitors are prohibited from sailing North or East of a line between the Red Post at the Harbour Entrance and buoys 2 and 4.

4. Finish of Event:

Outside of harbour: Haslar Wall signal station or committee vessel

Inside the harbour: Committee vessel, usually in the vicinity of Pile 13.

Note: There is provision within the Sailing Instructions for races to be shortened at turning marks in the race. This may be necessary due to adverse weather or shipping movements.

5. Manning and Race Control:

Haslar Wall Signal Station or Committee vessel (Galadriel) operating on VHF Channel 15.

6. Risk Assessment:

Notes:

Event Title: **Victory Class Racing 2020** _____ QHM Risk Assessment _____ Annual _____ Event Category _____
 (E.g. Better Ever Yacht Race Regatta) (Small, Medium, Major, Swim, Annual)

Event Title: Victory Class Racing 2020	Date(s) of Event: April to October 2020		Is a Local Notice to Mariners (LNTM) Requested? <input type="checkbox"/> YES <input checked="" type="checkbox"/> NO Is a draft LNTM included in submitted documentation? <input type="checkbox"/> YES <input checked="" type="checkbox"/> NO
Event Operating Area: Eastern Solent & Portsmouth Harbour	Event Timeframe/Operating Period: 17:30 – 21:30 Week night sailing 12:30 – 18:00 Weekend sailing		
Number of participating vessels/craft/ persons: Anticipated 4 or 5 boats.	Vessel type/s or design: Victory Class One design Sailing Yachts		
Organising Company/ Club/ Group: Victory Class Association Telephone No: 07740774731 (Sid Dollery – Sailing Secretary)	Event Website: http://victoryclass.org.uk/		
Event Officer: Sid Dollery – Sailing Secretary	Email: Sid.dollery@gmail.com		
Event Officers Mobile Phone No: 07740774731 (Sid Dollery – Sailing Secretary)	Authorities Informed:	If any additional documents submitted with this Risk Assessment please list.	Date Submitted:
VHF Channel/s to be used and monitored during event: 15	QHM	Other docs available from http://victoryclass.org.uk/racing#docs	___ / ___ / ____
Event Committee VHF Call sign: Victory Class Committee / Galadriel			___ / ___ / ____
QHM Risk Assessment Prepared by: Sid Dollery – Sailing Secretary			___ / ___ / ____
QHM Risk Assessment prepared date: 28/07/2020			___ / ___ / ____
Additional Comment/ Other:			

Plan of Event/ Racing Area *(Draw or insert graphic)*

Eastern Solent or inside Portsmouth Harbour

Event/Course(s) Configuration *(Draw or insert graphic)*

Standard courses given in course sheets.

LIKELIHOOD OF OCCURRENCE	Highly likely = 3	3	3	6	9
	Likely = 2	2	2	4	6
	Unlikely = 1	1	1	2	3
	Likelihood of Occurrence x Risk Consequence = RISK FACTOR	1	2	3	
		First Aid only/ Minimal Damage to asset = 1	Paramedic or ambulance/ Repairable Damage to asset = 2	Serious Injury or Death/ Total Write- Off of asset = 3	
			RISK CONSEQUENCE		

1 =	2 =	3 =	4 =	6 =	9 =
Minimal Risk	Minimal Risk	Moderate Risk (further control measures required to keep risk as low as reasonably possible)	Moderate Risk (further control measures required to keep risk as low as reasonably possible)	High Risk (further control measures required before QHM approval)	Unacceptable Risk

	No	Description of Hazard	Likelihood of risk occurring	Risk Consequence	Risk Factor	Primary control Measures* (choose from the "standard list" overleaf or add your specific control measures to list)	New Likelihood of risk occurring	New Risk Consequence	Final Risk Factor Assessment Unacceptable risk=9 High risk=6 Moderate risk= 3-4 Minimal risk = 1-2
			A	B	A x B =		C	D	C x D =
EXAMPLE	N/A	Race craft collide with another race craft	2	2	4	1.2, 1.4, 1.7, 2.2, 2.3, 2.5, 2.9	2	2	4
1. Vessel interaction	1.1	Racing boat with another racing boat	2	2	4	1.2, 1.3, 1.4, 1.7, 1.8, 1.9, 1.20, 2.2, 2.3, 2.9, 3.3 ,4.5	2	2	4
	1.2	Racing boat with spectator boat	1	2	2	1.2, 1.4, 1.9, 2.2, 2.9	1	2	2
	1.3	Racing boat with cruising boat	1	2	2	1.2, 1.4, 1.9, 2.2, 2.9	1	2	2
	1.4	Racing boat with commercial vessel	2	2	4	1.2, 1.4, 1.6, 1.9, 2.2, 2.9, 3.3, 3.4, 3.5	1	2	2
	1.5	Commercial vessel with spectator or cruising boat	1	3	3	1.6, 2.9	1	2	2
	1.6	Spectator boat with spectator or cruising boat	1	3	3	1.6, 2.9	1	2	2
	1.7	Ferry with racing, spectator or cruising boat	1	3	3	1.6, 2.9	1	2	2

2. Navigation	2.1	Negligent navigation	1	1	1	1.1, 1.9, 1.18, 2.2, 2.6, 3.6, 4.2	1	1	1
	2.2	Rig or equipment failure	2	3	6	1.7, 1.9, 1.18, 2.5, 2.6, 4.2, 4.5	2	2	4
	2.3	Vessel capsize	2	4	8	1.7, 1.9, 1.18, 2.5, 2.6, 4.2, 4.5	1	4	4
	2.4	After grounding	1	2	2	1.1, 1.9, 1.18, 2.6, 4.2, 4.5	1	2	2
	2.5	(Spare)							
3. Weather	3.1	Weather: wind, waves	3	2	6	1.7, 1.9, 1.18, 1.20, 2.2, 2.6, 4.2, 4.5	1	2	2
	3.2	Cancellation of event	2	2	4	1.7, 1.9, 1.18, 2.2, 2.6, 4.2, 4.5	1	2	2
	3.3	(Spare)							
4. Person	4.1	Man overboard	3	6	18	1.4, 1.8, 1.9, 1.18, 1.20, 2.2, 2.6, 2.7, 2.8, 2.9	3	1	3
	4.2	Injury impacting on external rescue services	2	6	12	1.4, 1.8, 1.9, 1.18, 2.2, 2.6, 2.7, 2.8, 2.9	1	2	2
	4.3	Medical assistance	2	6	12	1.4, 1.8, 1.9, 1.18, 1.19, 1.20, 2.2, 2.6, 2.7, 2.8, 2.9	1	2	2
	4.4	Fatigue	2	6	12	1.4, 1.8, 1.9, 1.18, 1.19, 1.20, 2.2, 2.6, 2.7, 2.8, 2.9, 4.2	1	2	2

5. Swim	5.1	Hypothermia							
	5.2	Fog							
	5.3	Swim pack becomes separated							
	5.4	Commercial shipping traffic							
	5.5	Recreational boating traffic							
	5.6	(Spare)							
6. Other	6.1	Shipping movements/ traffic	2	2	4	1.2, 1.4, 1.6, 1.7, 1.9, 1.18, 2.2, 2.5, 2.6, 2.7, 2.8, 2.9, 3.5, 4.5	1	2	2
	6.2	Engine failure impacting on other traffic	2	2	4	1.2, 1.4, 1.6, 1.7, 1.9, 1.18, 2.2, 2.5, 2.6, 2.7, 2.8, 2.9, 3.3, 3.5, 4.5	1	2	2
	6.3	Tide/ Tidal flow	2	2	4	1.1, 1.2, 1.4, 1.6, 1.7, 1.8, 1.9, 1.18, 2.2, 2.5, 2.6, 2.7, 2.8, 2.9, 3.3, 3.5, 4.2, 4.5, 5.2	1	2	2
	6.4	Correct information/ procedures for event	1	2	2	1.4, 1.8, 1.9, 2.2, 2.4, 2.5, 2.6	1	1	1
	6.5	Medical evacuation	2	6	12	1.4, 1.5, 1.8, 1.9, 1.14, 2.2, 2.4, 2.6, 2.7, 2.8, 3.2, 4.4	1	3	3
	6.6	Communications internal and external of event	2	2	4	1.9, 2.2, 2.3, 2.4, 2.6, 2.8	1	2	2
	6.8	Support craft	2	2	2	1.4, 1.5, 2.2, 2.3, 3.2, 4.4	1	2	2

	6.9	Transmission of Covid19	1	6	6	5.6, 5.7, 5.8, 5.9, 5.10, 5.11, 5.12	1	4	4
	6.10	(Spare)							
	6.11	(Spare)							
	6.12	(Spare)							
	6.13	(Spare)							
	6.14	(Spare)							
	6.15	(Spare)							
	6.16	(Spare)							
	6.17	(Spare)							
	6.18	(Spare)							
	6.19	(Spare)							

“Standard” Risk Control Measures *(If there are specific control measures for your event please add and number sequentially)*

	Measures	General Comments	Specific Event Comments and Measures
1.1	Use of Tidal Prediction Information	Time events to suit tidal range and streams.	
1.2	Limit competitor numbers	Match race entry numbers to organisational capacity and control assets.	
1.3	Planning of Starting Sequence	Starts sequenced to separate classes and avoid risk of collision during overtaking.	
1.4	Advance Briefing of Race Management	By oral briefing and/or written instructions.	
1.5	Advance Safety Briefing with Authorities.	Liaison between organising body and relevant port and Safety Organisations.	
1.6	Shipping Movement Monitoring	Includes obtaining details of planned movements from Authorities and monitoring of Port Control radio traffic.	
1.7	Weather monitoring	Use of weather forecast information when deciding whether to proceed.	
1.8	Event Manning and Management	Ensure adequate competent personnel.	
1.9	Emergency Procedures	Establishment of action plan for emergencies.	
1.10	Media Management	Establish one point of contact to control information that fed to press, television and radio, especially in the event of an emergency.	
1.11	Race Management Team Welfare	Ensure race management volunteers are equipped for the event.	
1.12	Display of flag ALPHA on support craft involved with swim event.		
1.13	Swimmers to wear highly visible swimming caps		
1.14	Trained first aid providers on location		
1.15	Inspection of participant's equipment pre event. Ensure fit for purpose.	Appropriately qualified persons to inspect equipment to ensure that maintenance has been carried out.	
1.16	Local Notice to Mariners issued by QHM	QHM will issue a LNTM via website with specific details of the event	
1.17	Adherence to QHM Cross Solent swim Code of Conduct		

1.18	Competitors required to carry functional outboard engine and fuel whilst racing.		
1.19	Competitors required to carry first aid pack with instructions.		
1.20	Racing takes place under the Racing Rules of Sailing	RRS 1.1 Helping Those in Danger A boat or competitor shall give all possible help to any person or vessel in danger. RRS 4 DECISION TO RACE The responsibility for a boat's decision to participate in a race or to continue <i>racing</i> is hers alone.	

2.1	Measures	General Comments	Specific Event Comments and Measures
2.2	Event Instructions/Amendments.	Instructions to competitors including specifying governing rules and amendments, compliance with Harbour Byelaws and Collision Regulations etc.	
2.3	Safety Briefing.	Safety briefing to competitors.	
2.4	Competitors' shore contact.	Competitors instructed to appoint shore contact (family/friend) and to supply details of all crew members on board boat to organising authority.	
2.5	Shore signals.	ISAF International Racing Rules of Sailing or amended by Sailing Instructions – provide signals for cancellation, abandonment, postponement and compulsory use of personal buoyancy.	
2.6	VHF Radio Announcements.	Radio announcements to competitors, and other vessels/observers on a designated VHF channel with predetermined fall back channels..	
2.7	Communication with Authorities.	Contact Harbour Control via VHF 11 with event commencement and completion	
2.8	Mobile Telephones and Private VHF Channel	Communication between race management personnel and with outside contacts.	
2.9	International Regulations for the Prevention of Collisions at Sea	Use for right of way between racing and non-racing traffic.	
2.10	(Spare)		
2.11	(Spare)		
2.12	(Spare)		

3.1	Measures	General Comments	Specific Event Comments and Measures
3.2	Marshalling Boats/Patrol and Escort Vessels	Safety patrol vessels to control competitors and any vessels craft that may try to entre the event area.	
3.3	Competitor Marshalling Areas	Designated waiting areas in event of postponement.	
3.4	Postponement/suspension of start	In the event of commercial traffic movements.	
3.5	Ferry Traffic	Check ferry times on race days to avoid clash.	
3.6	Briefs and meetings pre event	Participants and marshals to be briefed on event structure pre and post event.	
3.7	Weather cancellation policy in place with clear defined parameters	Weather cancellation to clearly state parameters for example: wind speed greater than 20 knots, wave height greater than 1.0 m, water temperature < 16 degrees.	
3.8	(Spare)		
3.9	(Spare)		
3.10	(Spare)		

4.1	Measures	General Comments	Specific Event Comments and Measures
4.2	Shortening course.	In the event of lack of wind or other factors.	
4.3	Race Observers.	Observers on shore at strategic locations.	
4.4	Escort vessels	Member's vessels and other boats	
4.5	Monitoring of weather/sea conditions	By communication from observers, escort vessels and competitors with mobile phones.	
4.6	(Spare)		
4.7	(Spare)		

4.8	(Spare)		
-----	---------	--	--

5.1	Measures	General Comments	Specific Event Comments and Measures
5.2	Retirement monitoring.	Radio reporting by vessels retiring and/or signed declarations by finishers or tally system.	
5.3	Marshal Vessels	Patrolling finishing area.	
5.4	Event Completion Declaration	Participants sign in after event to monitor all finishers.	
5.6	Social Distancing During Racing	1 Metre plus mitigation of face coverings unless singlehanded or from the same household. Now restricted to 2 competitors max per boat. Positions for helm and crew to sit in stipulated in sailing instructions. Competitors advised to refrain from shouting and avoid being face to face.	
5.7	Gathering	Competitors advised/reminded not to gather in large groups either before or after racing.	
5.8	Social Distancing in class launch	Competitors allocated place to stand whilst being ferried and advised to wear face coverings. Capacity of launch reduced to enable social distancing 1 Metre plus. Possible multi-trips across harbour due to reduced capacity.	
5.9	NHS Test and Trace	Contact details of helm and crew to be kept for three weeks to enable NHS Test and trace unless specifically opted out.	
5.10	Social Distancing Haslar Marina	Competitors berthed in Haslar Marina to be responsible for complying with any marina stipulated Covid restrictions and are to be careful to social distance whilst rigging and derigging.	
5.11	Reduced Wind Range For Racing	New limit of 15 knot gusts after which racing is not started, abandoned or curtailed to lessen any effects on emergency services.	
5.12	Symptoms	Competitors advised not to turn up to race if they have any Covid 19 symptoms (high temperature, a new, continuous cough and a loss or change to your sense of smell or taste.)	

