



## PORTSMOUTH CLUBS REGATTA & INTERNATIONAL TEMPEST CLASS NATIONAL AND OPEN CHAMPIONSHIP

19 - 21 JUNE 2026

PORTSMOUTH

ORGANISING AUTHORITY:  
HORNET SERVICES SAILING CLUB (HSSC)

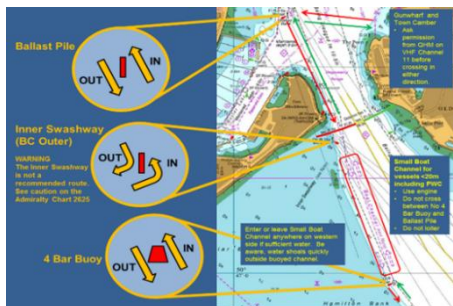
# SAILING INSTRUCTIONS

*The notation '[DP]' in a rule in the Sailing Instruction (SI) means that the penalty for a breach of that rule may, at the discretion of the Protest Committee, be less than disqualification.*

*All timings in this SI are British Summer Time (UTC+1)*

### 1. RULES

- 1.1. See Notice of Race **1 (Rules)**.
- 1.2. [DP] Competitors are reminded of their strict obligation NOT TO IMPEDE SHIPPING in the main buoyed channels and when proceeding in and out of Portsmouth harbour are to use the small Boat Channel as prescribed in KHM's Direction 2/26 ([Royal Navy](#)) and shown in the diagram below.



- 1.3. Competitors in boats without engines entering and leaving harbour must be towed or escorted by a recognized Race Committee (RC) support vessel operating in immediate proximity.
- 1.4. In order to avoid the risk of collision with merchant shipping which is underway a boat may use an engine, paddles, or any other means of propulsion, without retiring. Such use shall be reported to the Race Officer, who shall decide, what, if any, penalty to award.
- 1.5. In RRS 44.2 insert after the first sentence: However, if Mark 1a is set, a boat may delay taking a penalty for an incident in the zone around Mark 1 or on the leg between Mark 1 and Mark 1a, until she has passed Mark 1a.

- 1.6. All boats are to carry, and monitor, a functioning marine VHF radio capable of receiving and transmitting on standard VHF channels.
- 1.7. Competitors are required to submit details of all crew and contacts 'In Case of Emergency'. This is to support access to MoD sites and support the Major Incident Plan. The following form should be used: [Portsmouth Regatta Contact Details](#)

### 2. CHANGES TO SAILING INSTRUCTIONS

- 2.1. Any change to the Sailing Instructions (SIs) made ashore will be posted by 0900 on the day it will take effect, except that any change to the schedule of races will be posted by 2000 on the day before it will take effect.
- 2.2. Changes to the Sailing Instructions may be made after 0900 but prior to the warning signal by the RC and advised by VHF or verbally. The Committee Vessel (CV) displaying Flag L shall draw attention to any such amendments.

### 3. COMMUNICATIONS WITH COMPETITORS

- 3.1. Notices to competitors will be posted on the Official Notice Board (ONB). The ONB will be located at: [www.portsmouthregatta.co.uk](http://www.portsmouthregatta.co.uk).
- 3.2. The RC will broadcast race information and course information by VHF Ch 72 and regatta information on the Event WhatsApp Group. See Addendum A. Failure to receive information via VHF or WhatsApp will not provide grounds for redress.
- 3.3. Competitors wishing to communicate with the RC may do so on VHF Ch 72 or by hailing the CV using the call sign 'Hornet Race Committee'.
- 3.4. Portsmouth VTS (King's Harbour Master and Port Control Authority) operates on VHF Ch 11.

### 4. CODE OF CONDUCT

- 4.1. Competitors and support persons shall comply with reasonable requests from race officials.

### 5. SIGNALS MADE ASHORE AND AFLOAT

- 5.1. Signals will not be made ashore. The event WhatsApp Group may be used for announcements whilst competitors are ashore.

### 6. SCHEDULE

- 6.1. See Notice of Race **9 (Schedule)**. Bookings for suppers at HSSC on Friday should be made in advance via [functions@hornetservicesailing.org.uk](mailto:functions@hornetservicesailing.org.uk).
- 6.2. As a service to competitors a morning briefing may be provided on VHF Ch72 and the event WhatsApp Group 90 minutes prior to the first Warning Signal of each day. Failure to receive this information will not be grounds for seeking redress.
- 6.3. Yachts will be allocated to Classes via the ONB no later than 1600 on Thursday 18 June.

### 7. CLASS FLAGS

The class flag is shown below.

Tempest Class Flag	
Tango	

Victory Class Flag	
Zulu	
Class 1 NP 1	
Class 2 NP 2	

## 8. RACING AREA

- 8.1. Racing will take place from a CV in the Eastern Solent, including Portsmouth Harbour. The area to the east of the submerged barrier that extends from shore to Horse Sand Fort may also be used.
- 8.2. The CV will indicate its intended location on the event WhatsApp and VHF Ch 72 approximately 60 minutes prior to the first Warning Signal of each day.

## 9. COURSES

- 9.1. The courses to be sailed will be either a windward / leeward configuration as illustrated at Addendum B or a 'Round the Cans' course announced on VHF.
- 9.2. For races in Portsmouth Harbour, Buoys, Laid Marks and Posts must be rounded in the order and with the rounding that was announced. All boats must stay within marked channels of the harbour except for those marks designated marks of the course. Boats must also stay the channel side of any moored yachts and not weave between moored yachts.
- 9.3. When sailing a nominated W/L course as described in Addendum B, if only a single windward or leeward mark is present, boats shall leave that mark to port before proceeding to the next mark of the course.
- 9.4. The RC will announce course information on VHF Ch 72 and may display it on the CV.

## 10. MARKS

- 10.1. With reference to Addendum B, marks 1, 1a, 4s & 4p will be inflatable marks. Colours of marks including change marks will be advised as part of event briefings.
- 10.2. The starting and finishing marks for windward leeward courses will be between a CV and nominated inflatable mark or fixed mark.

## 11. OBSTRUCTIONS

- 11.1. Any official boat in close attendance to a craft in difficulty is an obstruction.

## 12. THE START

- 12.1. Races will be started by using RRS 26, with the Warning Signal made 5 minutes before the Starting Signal.
- 12.2. To alert boats that a start sequence will soon begin, an Orange Flag will be displayed with one sound signal not less than 5 minutes before the warning signal.
- 12.3. The start line will be between a staff displaying an orange flag on the CV and the nominated Pin / ODM.
- 12.4. The Race Committee **may** broadcast the sail numbers of individually recalled boats on VHF CH 72, as soon as practicable after Flag X has been displayed. Delay or failure

to do so is not grounds for redress. This changes RRS 62.1(a).

- 12.5. A boat that does not start within five (5) minutes after her starting signal will be scored Did Not Start without a hearing. This changes RRS A5.1 and A5.2.

## 13. CHANGE OF THE NEXT LEG OF THE COURSE

- 13.1. When a change of the next leg of the course has been signalled, the RC will lay a new mark (or move the finishing line) and remove the original mark as soon as practicable.
- 13.2. The race committee may announce details of any change under SI 13.1 using VHF Ch 72. Failure of a boat to hear such an announcement will not be grounds for a request for redress. This changes RRS 62.1(a).
- 13.3. The position of any mark(s) may be adjusted by up to plus or minus 15 degrees relative to previous location and up to approximately 400 metres to windward or leeward without signaling Flag C, a direction signal, a length signal, or a sound signal. This changes RRS 33.

## 14. THE FINISH

- 14.1. The finish line for will be between a staff displaying a blue flag on the CV and a nominated finishing mark.

## 15. PENALTY SYSTEM

- 15.1. See Notice of Race **14 (Penalty System)**.

## 16. TIME LIMITS

- 16.1. The Mark 1 Time Limit, Race Time Limit (see RRS 35) and the Target Time are shown in the table below.

Class	Day	Race Time Limit	Finishing Window	Target Race Time
Tempest Class	Fri	90 mins	20 mins	50 mins
	Sat / Sun	105 mins	20 mins	75 mins
Victory Class	Fri	90 mins	20 mins	50 mins
	Sat / Sun	105 mins	20 mins	75 mins
Yacht Divisions	Fri	150 mins	30 mins	75 mins
	Sat / Sun	150 mins	30 mins	90 mins

- 16.2. If no boat has finished within the Race Time Limit, the race shall be abandoned.
- 16.3. Finishing Window. Boats still sailing more than 20 or 30 minutes as applicable for the day racing after the first boat finishes shall be awarded the points for the place behind the last boat, which has finished the race within this time.
- 16.4. Failure to meet the target time will not be grounds for redress. This changes RR62.1(a).

## 17. HEARING REQUESTS

- 17.1. The protest limit is 60 minutes after the last boat has returned ashore or the Race Committee signals no more racing today, whichever is later.
- 17.2. Hearing forms will be available at the Race Office.
- 17.3. Protest and requests for redress or reopening shall be delivered to the Race Office within the protest time limit. Contact mobile phone numbers should be included on the protest form.
- 17.4. Notices will be posted no later than 30 minutes after the protest time limit to inform competitors of the hearings in

which they are parties or named as witnesses. Hearings will be held in the protest room located at HSSC.

- 17.5. In accordance with RYA guidance on arbitration, disputes arising during the event will aim to be resolved through the arbitration process. The panel will be appointed by the RC and will have a minimum of 2 members. The arbitration hearing will take place as soon as practicable after the request has been made and evidence may be provided by witnesses if relevant. The arbitrators will make a decision based on the evidence presented. If the decision involves a penalty it must be accepted by both parties. Failure to accept may result in a formal protest being lodged.

## 18. SCORING

- 18.1. See Notice of Race **15 (Scoring)**.
- 18.2. For the Tempest Class and further to NoR 15, the results will be calculated based on PYN using 942 for post 1985 built boats and 962 for pre 1985 built boats as agreed by the ITA of GB.

## 19. SAFETY REGULATIONS

- 19.1. [DP] A boat that retires from a race shall notify the Race Committee as soon as possible on VHF Ch 72 or by hailing an official regatta support boat or RIB.

## 20. REPLACEMENT OF CREW OR EQUIPMENT

- 20.1. Substitution of competitors is not allowed without the prior written permission of the Race Committee.

## 21. EQUIPMENT AND MEASUREMENT CHECKS

- 21.1. A boat's equipment may be inspected at any time.

## 22. SUPPLIED BOATS

- 22.1. Does not apply.

## 23. OFFICIAL VESSELS

- 23.1. The Committee Vessel (CV) will be a 16m and/or a 10m yacht.

## 24. SUPPORT PERSON VESSELS

- 24.1. See Notice of Race **16 (Support Person Vessels)**.

## 25. TRASH

- 25.1. Trash may be placed aboard official or support person vessels.

## 26. BERTHING

- 26.1. See Notice of Race **18 (Berthing)**.

## 27. HAUL OUT RESTRICTIONS

- 27.1. See Notice of Race **19 (Haul Out Restrictions)**.

## 28. DIVING EQUIPMENT AND PLASTIC POOLS

- 28.1. See Notice of Race **20 (Diving Equipment and Plastic Pools)**.

## 29. PRIZES

- 29.1. See Notice of Race **24 (Prizes)**.

## 30. RISK STATEMENT

- 30.1. See Notice of Race **22 (Risk Statement)**.

## 31. INSURANCE

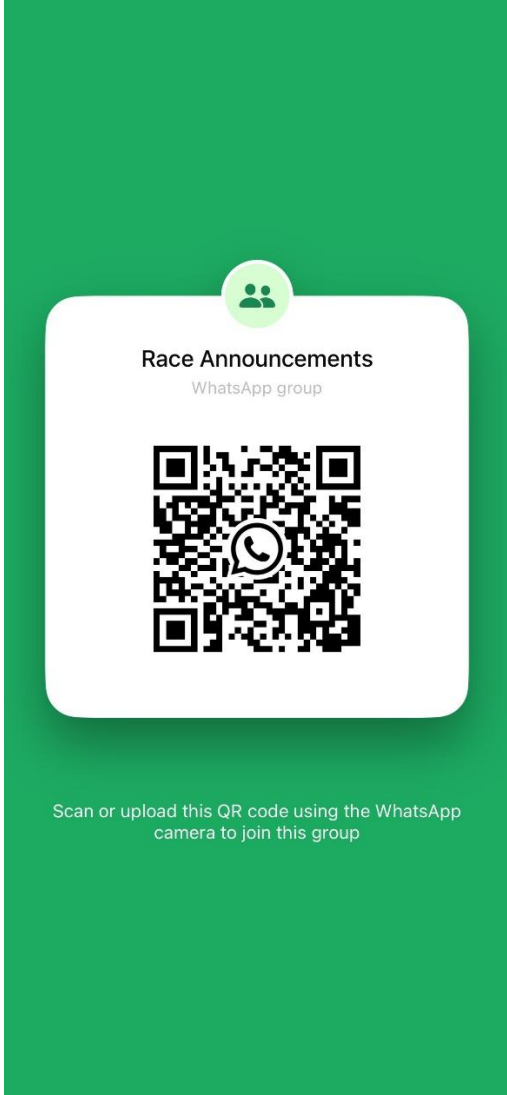
- 31.1. See Notice of Race **23 (Insurance)**.

\*\*\*\*\*

**ADDENDUM A – Event WhatsApp Group**

Please join the Event WhatsApp Group using the QR code below or use the following link:

**Competitors' WhatsApp Link**



ADDENDUM B

**Course Illustrations – Windward Leeward**

**LA**

**Course: Leeward finish**

Signal Mark Rounding Order

LA1 Start – 1 – 1a - Finish  
 LA2 Start – 1 – 1a - 4s/4p – 1 – 1a - Finish  
 LA3 Start – 1 – 1a - 4s/4p – 1 – 1a - 4s/4p – 1 – 1a - Finish

**WA**

**Course: Windward Finish**

Signal Mark Rounding Order

WA1 Start – 1 - 1a – 4s/4p – Finish  
 WA2 Start – 1 – 1a - 4s/4p – 1 – 1a - 4s/4p – Finish  
 WA3 Start – 1 – 1a - 4s/4p – 1 – 1a - 4s/4p – 1 – 1a - 4s/4p – Finish

**L / W**

**Course: Windward/leeward without offset mark 1a**

Signal Mark Rounding Order

L1 Start – 1 – 4p - Finish  
 L2 Start – 1 – 4s/4p – 1 - Finish  
 L3 Start – 1 – 4s/4p – 1 – 4s/4p – 1 – Finish  
 W1 Start – 1 – 4s/4p – Finish  
 W2 Start – 1 – 4s/4p – 1 – 4s/4p – Finish  
 W3 Start – 1 – 4s/4p – 1 – 4s/4p – 1 – 4s/4p – Finish